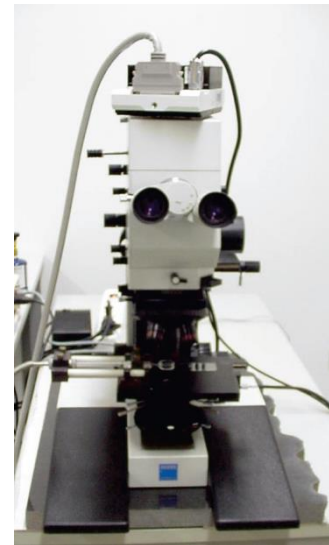


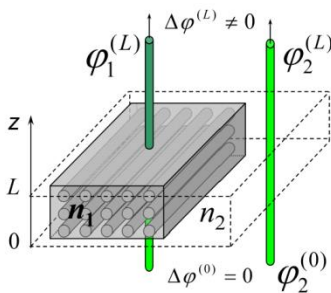
Interference Microscopy (IFM)

- Interference Microscope Jenamap p dyn (Carl Zeiss GmbH), controlled by a personal computer, a CCD camera (SenSys KAF 0400, Photometrics)
- In-situ monitoring of transient concentration profiles during molecular uptake, release and conversion
- Exploration of the nature of surface barriers by assessing surface permeabilities; determination of the sticking coefficients (p_{st}) of nanoporous catalysts
- Applicability depends on sample specifications (particle and pore sizes, sample homogeneity, surface properties)
- For more details, see chapter 12 (introduction to the technique) and 15 to 21 (examples of application) in J. Kärger, D. M. Ruthven, D. N. Theodorou: [Diffusion in nanoporous materials](#), Wiley-VCH, Weinheim 2012



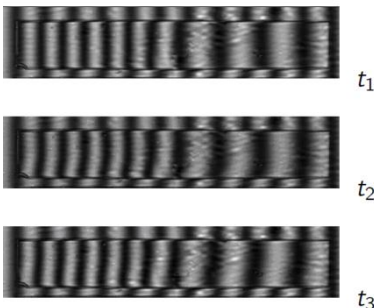
- spatial resolution: up to $0.5 \mu\text{m} \times 0.5 \mu\text{m}$
- time resolution: 10 s

IFM – basic principle

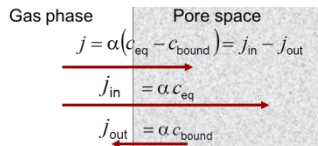
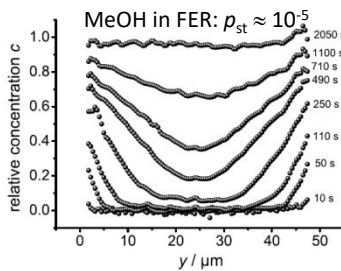
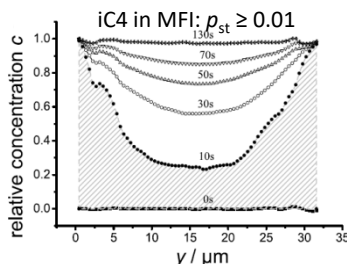


Intensity $I \propto \cos(\Delta\varphi^{(L)})$

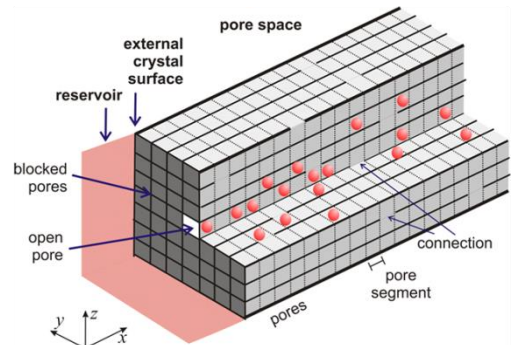
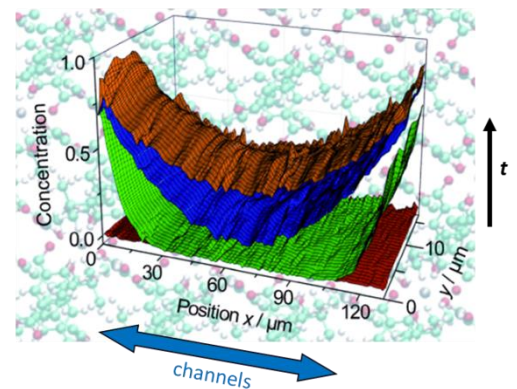
Uptake \rightarrow shift in IF-patterns



Calculation of sticking coefficients



Exploring the nature of surface barriers



Contact:

Dr. C. Chmelik
 Faculty of Physics and Earth Sciences
 University of Leipzig
 Linnestr. 5, D-04103 Leipzig, Germany
 tel. (fax) +49 341 9732 531/(/549)
chmelik@physik.uni-leipzig.de
www.grenzflaechenphysik.de

Prof. J. Kärger
 Faculty of Physics and Earth Sciences
 University of Leipzig
 Linnestr. 5, D-04103 Leipzig, Germany
 tel. (fax) +49 341 9732 531/(/549)
kaerger@physik.uni-leipzig.de
www.grenzflaechenphysik.de

Prof. J. Haase
 Faculty of Physics and Earth Sciences
 University of Leipzig
 Linnestr. 5, D-04103 Leipzig, Germany
 tel. (fax) +49 341 9732 601/(/649)
j.haase@physik.uni-leipzig.de
<http://www.uni-leipzig.de/~mqf>